



*lion*STEEL® 2017



LIONSTEEL A FAMILY PASSION

Let's walk a bit from the past...

It was 19th century when Lionsteel history began. Chisel workers were climbing Mount Jouf, just over Maniago, to cut stones that would then be used to create unique sculptures. These brave men were equipped with sled and chisel, but especially with a lot of good will and nerve. One of the results was the native stone lion sculpture made by Gino Pauletta's grandfather. The young Gino, founder of Lionsteel, was afraid of this lion and resolved to cut its tail with a saw, thus angering his father. However, he then decided to follow the Maniago's knife tradition, and in 1969 he founded, with his wife Cesarina, a his own knife company. In the 1980s, when he needed a new name for his growing business, he decided to redeem himself towards the stone lion with the broken tail, dedicating the name of his company to it. Since the core activity was working steel, he chose the name Lionsteel.

Initial production mainly revolved around hunting knives made for the Italian market. Modern Lionsteel dates to the end of the 20th century, when Gino's sons Daniele, Gianni and Massimo began working in the company. They brought new and fresh ideas which led to a renewal in the product line and in the production process: new CNC technologies, advanced design software and IT solutions were adopted. The first years of the 21st century also marked a shift in the product range: EDC (Every Day Carry) knives, which are ideal for everyday life and "live" in the pocket or in the bag of their users, became the core products.

With the new SOLID® knife technology Lionsteel heralds a new era in the utility knife production process. The handles are made of a single piece to achieve the ultimate hard-wearing and sturdy knife handle.

The cornerstones of Lionsteel are still the artisans who work inside the company. While using cutting edge technology, Lionsteel is more about the people who make every product special. The company now employees about 20 specialized workers and is present in 34 countries. The Lionsteel mission ensures all knives are manufactured in its factory in Maniago: no third party products are sold, and no production is outsourced. All products are proudly Made in Maniago, Italy. This ensures a meticulous and fanatical check over product quality.

THE STRENGTH OF A FAMILY LIES IN ITS RESOLUTION AND TEAM SPIRIT.

Each single result requires a great deal of commitment, passion and persistence.

The individual work, the commitment of the whole Pauletta family and the complete LionSteel team dedication are the features that explain the prestigious and remarkable achievements of all these recent years.

From the left side: Massimo, Daniele, Rorita, Mirko, Cesarina, Evelin, Angelica, Marco, Michela Gianluca, Gino, Simone, Caterina, Isabella, Ika, Marco, Giovanni, Vittorina, Sofia and Gianni.



PAULETTA FAMILY



MILL

CUT

LATHE

TECHNOLOGY and ORGANIZATION

Tutti i componenti di ogni singolo coltello vengono lavorati con macchine a controllo numerico. La costante precisione della lavorazione ci permette di ottenere e di garantire la qualità di ogni pezzo. L'informatica e la tecnologia sono ormai parte integrante del ciclo produttivo LionSteel.

Artigiano in LionSteel è colui che con sapienti mani e tradizioni antiche, modella, perfeziona, affina e nobilita uno dei più antichi compagni dell'uomo: il coltello.

Da generazioni si tramanda la conoscenza delle tecniche di lavorazione dei materiali e la passione per questo oggetto, amico dell'uomo, che lo accompagna nel lavoro, nello sport, nella caccia, nella pesca e nelle attività legate alla montagna.

All the components of each single knife are crafted with numeric control machines. The constant machining precision allows us to obtain and guarantee the quality of each single piece. Information technology and technical know-how are by now an integral part of LionSteel's productive cycle.

At LionSteel, an artisan is the craftsman that with skilled hands and age-old traditions, crafts, perfects, refines and ennobles one of man's most ancient companions: the knife.

Through the generations, knowledge of the techniques used in crafting the materials has been handed down, together with a passion for this object, man's friend, which accompanies him in work, sport, hunting, fishing and in all those activities linked with the mountain.



SOLID[®] knife technology

Lionsteel con la nuova tecnologia SOLID[®] Knife, segna una nuova era nei processi di produzione del coltello sportivo. La ricerca della massima resistenza e robustezza del coltello trova risposta nella produzione di manichette ottenute da un singolo pezzo.

Il primo ed ormai famoso coltello che propone il manico SOLID[®] è l'SR1 già dal 2010.

Partendo da un parallelepipedo di Titanio, utilizzando un centro di lavoro a tre assi, siamo riusciti ad ottenere il primo manico monolitico, un singolo pezzo, un manico SOLID[®].

Nel 2013, grazie alla nuova tecnologia acquistata in LionSteel, abbiamo introdotto il modello TiSpine. Questo coltello è dotato di un manico SOLID[®] in Titanio realizzato con un centro di lavoro a quattro assi. Nuova tecnologia che ci permette di lavorare in modo continuo anche il dorso del manico.

Visto che entrambi questi coltelli erano Frame-Lock abbiamo deciso, a fine 2013, di applicare la tecnologia del manico SOLID[®] anche ad altri tipi di funzionamento. Nascono nel 2014 il TM1, coltello chiudibile con blocco a pompa e manico SOLID[®] in Fibra di Carbonio ed il coltello a lama fissa M7 con manico SOLID[®] in Micarta, entrambi lavorati con fresature 4D.

With the new SOLID[®] Knife technology, Lionsteel heralds a new era in the utility knife production process. The handles are made of a single piece to achieve the ultimate hard-wearing and sturdy knife handle.

The first ever knife to feature the SOLID[®] handle is the now famous SR1, launched in 2010.

Starting with a titanium parallelepiped and using a three-centrelines machining station, it took us considerable effort to produce the first ever monolithic handle, a single piece, the SOLID[®] knife handle.

Not content with the three-centrelines machining process, thanks to the new technology acquired by LionSteel, we introduced the TiSpine model in 2013. This knife is also fitted with a SOLID[®] titanium handle, produced with a four-centrelines machining station which allows us to machine the spine of the handle as well.

Since both these models are Frame-Lock knives, we decided in late 2013 to apply the SOLID[®] handle technology to other operating types also. Hence the launch in 2014 of the TM1 folding knife, with lockback and 4D machined SOLID[®] carbon fibre handle, and the M7 fixed-blade knife with 4D machined SOLID[®] Micarta handle.



SOLID[®] knife

lionSTEEL® knife technology

Blade Show 2014 Atlanta. After more than a decade of unbeatable American domination, Italian company Lionsteel won the Best Manufacturing Quality Award and the Overall Knife of the Year Award – the highest forms of praise at the most important knife trade show in the world. It rewards only the best industrial processes and the best products. The creation of TiDust – with its solid titanium handle made using the selective laser sintering technique, thus far only seen used in the aerospace industry – was real recognition of the SOLID® technology by Lionsteel.

In 2015, this Maniago-based company did it again in Atlanta, winning Overall Knife of the Year (the prize awarded for the best product) for Lionsteel T.R.E., a foldable-blade knife with Lionsteel's trademark elegant lines but never-seen-before production and technology content. The year after, in 2016, it was the turn of new model KUR Metamorphosis to attract the attention and votes of the other exhibitors. This innovative solution features a surface treatment on the handle that changes colour according to the temperature. It snatched Lionsteel the Overall Knife of the Year Award again, for the third year running.

Success in America was the crowning glory for this company and its compelling quest for innovation in production processes and product design, which began at the start of the new millennium with brothers Daniele, Gianni and Massimo Pauletta. They brought together the experience of a business venture launched by father Gino and mother Cesarina in 1969, and took this made-in-Maniago company to the ultimate level in terms of global quality standards for manufacturing everyday carry knives.

This is a tale of creativity, of vision and of seizing the moment with an ability to look beyond the present. It was 1979 when an American-made knife with a handle made up of inlays, on display in the famous Gallery in Milan, captured the imagination of Gino Pauletta, and this was to be the start of Lionsteel's first great success. It was in that moment that his new steel lion, his brand inspired by an ancient sculpture carved with the stone of Mount Jôuf by his masonry ancestors, started to roar.

Lionsteel is the perfect, all-Italian synthesis of tradition and innovation. The tradition is of knife-manufacturing in Maniago, passed down through the generations in this Friulian town for more than six hundred years. The innovation is from a family that was capable of looking beyond their immediate surroundings, picking up on signals of what the future would hold: unexplored technologies, new markets. It is a story made with human hands, with ingenuity and the Greek concept of "techne", or rather "art", from which the word "technology" derives. It is a story today told in more thirty countries around the world. A tale told with pride and passion.



UNFORGETTABLE KNIVES

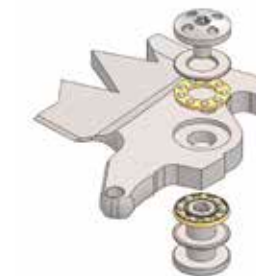
KUR METAMORPHOSIS

Liner lock with flipper, Sleiþner steel blade, steel liners. Titanium spacer. Ball bearings.

Metamorphosis handle: it is an Aluminum handle with a special coating, which is heat sensitive. Normally the handle is black but as soon as the temperature reach 22-23 °C the handle changes the colour! If you keep the knife in your hand for a couples of minutes it will change the colour from black to Camouflage.

Designed by MOLLETTA

lionSTEEL® IKBS
Italy



SOLD OUT

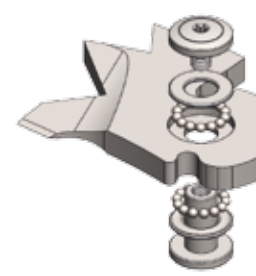
TI DUST

LionSteel "TiDust Titanium" was created from the union of artisan traditions and aerospace technology. We created the world's first folding knife made using Additive Manufacturing (3D Printing). Selective laser melting blasts layers of Titanium powder with a laser thus hardening only small portions! This particular type of production makes it possible to create the handle by fusing and molding Grade 5 Titanium microspheres into a 3D product.

"TiDust" has an Uddeholm Sleiþner steel blade hardened to 60-61 HRC, the handle is Grade 5 Titanium, includes a tungsten carbide glass breaker, the pivot rides on IKBS bearings for smooth action and the double spring lock back mechanism ensures greater flexibility and improved durability of the locking system. The creation of this manufacturing jewel resulted in LionSteel winning the illustrious "Manufacturing Quality Award" at the 2014 Blade Show!

"TiDust" is part of a 100 piece Limited Edition run made expressly for our most loyal customers. Serial Number 1 of 100.

lionSTEEL® IKBS
Italy



SOLD OUT



SR 11 TITANIUM

The SR-11 represents the evolution of the historic SR-1 model, award winner at at Blade Show 2010. The additional features are: flipper opening with ball-bearing system, two ball bearing with facilitate the opening and closing of the blade, and a window breaker in tungsten carbide. Moreover, as its predecessor, the SR-11 features a Rotoblock system, which blocks the frame in the open position. The frame is obtained from a unique piece, completely worked with 4-axis machining. The frame point is made of steel, in order to avoid wear of the titanium frame body. The clip is reversible, and can be mounted on both sides.

Designed by MOLLETTA



SR11 BB



SR11 B



SR11 G

Lunghezza lama / Blade length: 94 mm. - 3.70 in.
 Spessore lama / Blade thickness: 4.5 mm. - 0.18 in.
 Lunghezza totale / Total length: 211 mm. - 8.31 in.
 Peso totale / Total weight: 146 gr. - 5.15 oz.
 Scocca / Frame: Titanium 6Al4V
 Acciaio lama / Blade steel: Sleipner 60-61 HRC
 Imballo / Packaging: Leather sheath

Imballo: Fodero in pelle
 Packaging: Leather sheath





SR 11 ALUMINUM

The SR-11 represents the evolution of the historic SR-1 model, award winner at at Blade Show 2010.

The additional features are: flipper opening with ball-bearing system, two ball bearing with facilitate the opening and closing of the blade, and a window breaker in tungsten carbide.

Moreover, as its predecessor, the SR-11 features a Rotoblock system, which blocks the frame in the open position.

The frame is obtained from a unique piece, completely worked with 4-axis machining.

The frame point is made of steel, in order to avoid wear of the titanium frame body.

The clip is reversible, and can be mounted on both sides.

Designed by MOLLETTA



Lunghezza lama / Blade length: 94 mm. - 3.70 in.
 Spessore lama / Blade thickness: 4.5 mm. - 0.18 in.
 Lunghezza totale / Total length: 211 mm. - 8.31 in.
 Peso totale / Total weight: 146 gr. - 5.15 oz.
 Scocca / Frame: Alluminum
 Acciaio lama / Blade steel: Sleipner 60-61 HRC



ORANGE



RED



BLACK

	SR11	ORANGE	RED	BLACK
	SATIN BLADE	SR11A OS	SR11A RS	SR11A BS
	BLACK BLADE	SR11A OB	SR11A RB	SR11A BB

SOLID® knife

SR DAMASCUS

La famiglia SR si arricchisce delle versioni lusso con lama in Damasco.
La scocca ha una costruzione **SOLID®** monolitica in Titanio Ti6Al4V gr. 5 con sistema di chiusura Frame-Lock ricavata da un pezzo pieno di Titanio completamente fresato con centri di lavoro.
La lama è costruita con Damasco Inox prodotto in US da Chad Nichols nelle due versioni, Lizard e RainDrop.

*The SR product family is extended with the deluxe versions featuring a Damascus blade. Built with a 5-gram **SOLID®** Ti6Al4V titanium monolithic body fitted with frame lock, made with a solid piece of titanium, milled with machining stations. The blade is built with Stainless Damascus produced in the US by Chad Nichols in two versions: Lizard and RainDrop.*

Il coltello viene venduto in una elegante scatola in legno. In dotazione c'è la clip e la chiavetta di regolazione.

It comes into a nice wooden gift box supplied with a clip and control key.



SR2DR G
raindrop damascus

SR1DL G
lizard damascus

SR1 original

Lunghezza lama / blade length: 94 mm
Spessore lama / blade thickness: 4.5 mm
Lunghezza totale / total length: 211 mm
Peso totale / total weight: 201 gr
Titanio: Ti6AL4V gr 5

SR2 mini

Lunghezza lama / blade length: 78 mm
Spessore lama / blade thickness: 4 mm
Lunghezza totale / total length: 180 mm
Peso totale / total weight: 139 gr
Titanio: Ti6AL4V gr 5

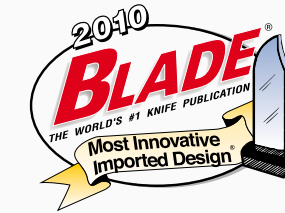
	LIZARD	RAINDROP
SR1 original	SR1DL G	SR1DR G
SR2 mini	SR2DL G	SR2DR G



SR TITANIUM

Coltello chiudibile monolitico in Titanio con sistema Frame Lock. È disponibile in due misure di grandezza, entrambe nelle tre versioni di colore del Titanio: Grigio, Bronzo e Violetta. La lama è fatta in acciaio Uddeholm Sleiþner di una durezza di circa 61HRC. La scocca è ottenuta da un pezzo unico completamente fresato a CNC. Coltello disegnato da Molletta.

Monolithic titanium knife and frame-lock system. It is available in two size, both available in three different colours of titanium: grey, bronze and purple. The blade is made of Uddeholm Sleiþner steel and has a hardness of about 61 HRC. The shell is made from a single piece of total CNC machined titanium. Knife designed by Molletta.



SR2 mini

SR1 original



Il coltello viene venduto in una elegante scatola in legno. In dotazione c'è la clip e la chiavetta di regolazione.

It comes into a nice wooden gift box supplied with a clip and control key.

The knife has a RotoBlock safety system patented by LionSteel. With a simple rotation of the Rotoblock you will fix the blade in open position. The titanium toolbar has been reinforced with a hardened steel insert. The supplied key allows you to adjust the blade screw and fix the clip. The screw clip is equipped with glass-breaker.

> RotoBlock system

Il coltello è dotato del sistema di sicurezza RotoBlock, brevetto LionSteel. Con una semplice rotazione della ghiera si blocca la lama in posizione aperta. Il liner in Titanio è rinforzato da un inserto in acciaio temperato. La chiavetta in dotazione permette di regolare la vite della lama ed inserire la clip. La vite della clip è dotata del frangi vetro.



SR1 ORIGINAL

Lunghezza lama / blade length: 94 mm
Spessore lama / blade thickness: 4.5 mm
Lunghezza totale / total length: 211 mm
Peso totale / total weight: 201 gr

SR2 MINI

Lunghezza lama / blade length: 78 mm
Spessore lama / blade thickness: 4 mm
Lunghezza totale / total length: 180 mm
Peso totale / total weight: 139 gr

Sleiþner: C 0.9 / Si 0.9 / Mn 0.5 / Cr 7.8 / Mo 2.5 / V 0.5
Titanio: 6Al4V gr 5

	GREY	BRONZE	PURPLE
SR1 original	SR1 G	SR1 B	SR1 V
SR2 mini	SR2 G	SR2 B	SR2 V


900SR1

110 mm chiuso
110 mm closed

**SR 2 mini**

Lunghezza lama / blade length: 78 mm
Spessore lama / blade thickness: 4 mm
Lunghezza totale / total length: 180 mm
Peso totale / total weight: 108 gr
Sleipner: C 0.9 / Si 0.9 / Mn 0.5 / Cr 7.8 / Mo 2.5 / V 0.5
Alluminio Ergal

SR2 A BS**SR2 A GB****SR2 A OS****SR2 A RS**

SR-2 mini		BLACK	GREEN	ORANGE	RED
	SATIN BLADE	SR2A BS	SR2A GS	SR2A OS	SR2A RS
	BLACK BLADE	SR2A BB	SR2A GB	SR2A OB	SR2A RB

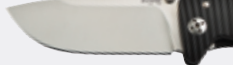

SR ALUMINIUM

Versione Legend del modello SR con scocca monolitica in Alluminio Ergal. Disponibile con finitura satinata o MilSpec, nero chimico. L'alluminio anodizzato in quattro differenti colori: Nero, Verde, Rosso ed Arancione. La scocca in alluminio permette di ottenere un coltello più leggero del fratello in Titanio. Viene confezionato in una scatola di cartone con chiavetta per la regolazione della tensione della lama.

Legend version of the SR model with single-piece shell in Ergal Aluminium. Available in satin or MilSpec finish, chemical black. The anodised aluminium used comes in four different colours: Black, Green, Red and Orange. The aluminium shell results in a lighter knife than its Titanium "brother". It comes packed in a cardboard box and is equipped with a tool for adjusting the blade's tension.

**SR 2 mini****SR 1 original****SR 1 original**

Lunghezza lama / blade length: 94 mm
Spessore lama / blade thickness: 4.5 mm
Lunghezza totale / total length: 211 mm
Peso totale / total weight: 158 gr
D-2: C 1.5-1.6 / Cr 11-12 / Mn 0.35 / Si 0.3 / Mo 0.75 / V 1
Alluminio Ergal

SR-1 original		BLACK	GREEN	ORANGE	RED
	SATIN BLADE	SR1A BS	SR1A GS	SR1A OS	SR1A RS
	BLACK BLADE	SR1A BB	SR1A GB	SR1A OB	SR1A RB



TS1 DAMASCUS

La serie TiSpine si arricchisce con le versioni in Damasco. Come il modello SR1 anche questo ha il manico in Titanio SOLID®, 6AL4V lavorato con un centro di lavoro a quattro assi che permette di ottenere una perfetta ergonomia su tutto il manico. La lama è disponibile in tre versioni di Damasco prodotto da Chad Nichols USA: RainDrop, Lizard e Fate. Disegno di RYP

The TiSpine range is extended with the Damascus versions. Like the SR1 model, this knife also has a SOLID® 6AL4V titanium handle machined with a four-centrelines station which makes it possible to achieve perfect ergonomics across the entire handle. The blade is available in three versions of Damascus produced by Chad Nichols, USA: RainDrop, Lizard and Fate. Design by RYP.

RYP
DESIGN

Lunghezza lama / blade length: 85 mm
Spessore lama / blade thickness: 3.5 mm
Lunghezza totale / total length: 195 mm
Peso totale / total weight: 100 gr
Titanio: 6Al4V gr 5
Lame / blades: Chad Nichols Damascusw



TS1DL GS
lizard damascus
grey shine Ti



TS1DR GM
raindrop damascus
grey matt Ti



TS1DF GM
fate damascus
grey matt Ti



TiSpine shine



TiSpine

Coltello chiudibile monolitico in Titanio con sistema Frame Lock. È disponibile nella versione Lucida od Opaca. Entrambe le finiture sono disponibili in tre differenti colorazioni del titanio. La lama è fatta in acciaio Uddeholm Elmax di una durezza di circa 59-60HRC. La scocca è ottenuta da un pezzo unico completamente fresato a CNC in 4 assi. Coltello disegnato da RYP.

Titanium, monolithic foldable knife with Frame Lock system. Available in the Shiny or Matt versions. Both finishes are available in the 3 shades on titanium. The blade is Uddeholm Elmax steel, with a 59-60HRC hardness. The body is a single piece, CNC milled with 4 centrelines. Design by RYP.

TiSpine matt



Lunghezza lama / blade length: 85 mm
Spessore lama / blade thickness: 3.5 mm
Lunghezza totale / total length: 195 mm
Peso totale / total weight: 100 gr
Elmax: C 1.7 / Cr 18 / Mn 0.3 / Si 0.8 / Mo 1 / V 3
Titanio: 6Al4V gr 5



Il coltello viene venduto in un elegante tubo di Plexiglass che permette di ammirare la lavorazione in continuo del Titanio. La scocca è ottenuta da un blocchetto di Titanio 6Al4V. Viene lavorata in continuo con una macchina CNC con quattro assi di lavoro.

The knife is sold in an elegant Plexiglas tube, to showcase the seamless titanium finish. The body is made of a 6Al4V titanium block. Seamlessly worked with a CNC machine on 4 centrelines.



	GREY	GOLD	BLUE
SHINE	TS1 GS	TS1 BS	TS1 VS
	GREY	BRONZE	PURPLE
MATT	TS1 GM	TS1 BM	TS1 VM



SOLID® knife



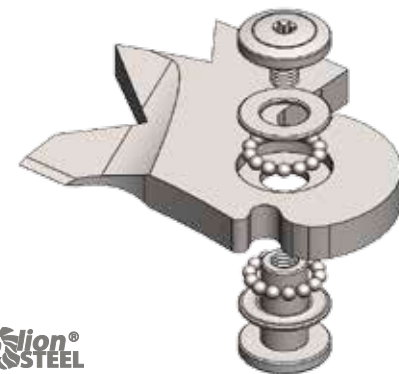
TM1 is fitted with a glass breaker and a tungsten carbide point Carbuo di Tungsteno. To enhance the knife mechanism, it has been supplemented with the IKBS system which envisages ball bearings to facilitate the blade sliding motion.

TM1 è dotato di uno spacca vetri con punta in Carbuo di Tungsteno. Per migliorare la meccanica del coltello è stato aggiunto il sistema IKBS che prevede dei cuscinetti a sfera che facilitano lo scorrimento della lama.

TM1

Following the previous SOLID® SR1 and TiSpine models, both frame lock folding knives, we decided to launch a SOLID® knife with lockback. The task was a challenge, considering our decision to use Micarta and carbon fibre for the monolithic one-piece construction of the handle using four-centrelines machining stations. The blade is available either satin finished or black. The clip can be fitted on either side of the handle, making this knife totally ambidextrous. The double spring lock back mechanism ensures greater flexibility in the mechanism and improved durability of the locking system. Design by Molletta.

lionSTEEL® IKBS
Italy



lionSTEEL





TM1 CS



TM1 MB



Lunghezza lama / Blade length: 90 mm
Spessore lama / Blade thickness: 4.5 mm
Lunghezza totale / Overall: 205 mm
Peso totale / Total weight: 100 gr
Acciaio / Steel: Sleiþner Uddeholm 61 HRC
Manico/Handle: Solid® Micarta or Carbon Fiber
Peso/Weight: 145 gr. Micarta, 144 gr. Carbon Fiber
Rompi vetro / Glass breacher: Tungsten Carbide

	MICARTA	CARBON FIBER
	TM1 MS	TM1 CS
	TM1 MB	TM1 CB



TRE DAMASCUS

Folding knife with Titanium Fame Locksystem.
 This knife is equipped with a patented system that allows the user to carry the knife with or without the Flipper feature choosing thus to screw or remove it from the blade.
 The knife has a fully machined Titanium frame, pocket clip and spacer.
 The handle has two different versions: titanium or Carbon Fiber.
 It is provided with the IKBS ball-bearing pivot system to improve the knife opening and closing and give the T.R.E. knife an ultra-fast opening action.

Design by MOLLETTA.

lionSTEEL IKBS
 Italy



TREDR FC RainDrop



TREDT FC Thor



TREDR GY RainDrop



TREDT GY Thor

Blade: Thor, Damasteel
 Blade: RainDrop, Chad Nichols
 Blade length: 74 mm
 Blade thickness: 3.5 mm
 Overall length: 175 mm
 Frame: Titanium 6Al4V
 Spacer & clip: Titanium 6Al4V
 IKBS ball bearing
 Stainless steel lock-bar tip
 Weight: Carbon Fiber 62 gr, Titanium 74 gr
 Handle: Titanium or Carbon Fiber or Black G10
 T.R.E.: LionSTEEL Patent pending



Il coltello viene venduto in una elegante scatola in legno. In dotazione ci sono delle chiavette Torx T6 e Torx T8 che permettono di posizionare sia il Flipper che il piolino di apertura della lama (Thumb Stub)

The knife comes with an elegant and attractive wood box equipped with a key chain with both Torx T6 and Torx T8 bits for the positioning or the removal of the Flipper, the Thumb Stud and the clip.

YOU CAN CHANGE...



...THEM

T.R.E.
Three rapid Exchange

T.R.E. Knife – THREE RAPID EXCHANGE

Ci sono tre possibilità di vestire il coltello: Nudo, senza Flipper e piolino sulla lama, Thumb Stud con il piolino sulla lama o con il Flipper per una veloce apertura.

The user may choose three ways to equip his knife: a simple basic version without Flipper and pin on the blade, a Thumb Stud version with the pin on the blade or adding the flipper for a quick opening action.

TRE

Coltello chiudibile con sistema Frame-Lock in Titanio. Questo coltello è dotato del sistema brevettato TRE che permette all'utente finale, a proprio piacimento, di avvitare il Flipper sulla lama. Il Frame, la clip ed il distanziale sono in Titanio. Il manico può essere in Titanio o in Fibra di Carbonio. Per migliorare la meccanica del coltello è stato aggiunto il sistema IKBS che prevede dei cuscinetti a sfera che facilitano lo scorrimento della lama. Design by MOLLETTA.

Folding knife with Titanium Frame Lock-system. This knife is equipped with a patented system that allows the user to carry the knife with or without the Flipper feature choosing thus to screw or remove it from the blade. The knife has a fully machined Titanium frame, pocket clip and spacer. The handle has two different versions: titanium or Carbon Fiber. It is provided with the IKBS ball-bearing pivot system to improve the knife opening and closing and give the T.R.E. knife an ultra-fast opening action. Designed by MOLLETTA.



Blade: M390 Bohler 60-61 HRC
Blade length: 74 mm
Blade thickness: 3.5 mm
Overall length: 175 mm
Frame: Titanium 6Al4V
Spacer & clip: Titanium 6Al4V
IKBS ball bearing
Stainless steel lock-bar tip
Weight: Carbon Fiber 62 gr, Titanium 74 gr
Handle: Titanium or Carbon Fiber or Black G10
T.R.E: LionSTEEL Patent pending





TRE G10

Coltello chiudibile con sistema Frame-Lock in Titanio. Per questo coltello il Flipper è parte integrante della lama, non può quindi essere tolto. Il manico è in G10 lavorato in 3D. I colori disponibili del manico sono quattro: Nero, Verde, Arancione e Rosa.

La lama è in acciaio M390.

Il distanziale è in G10 nero. Il Frame e la Clip sono in Titanio grigio.

Viene venduto in una scatola di cartone

Folding knife with titanium frame Lock-system. For this model the Flipper is a permanent and integral part of the blade and cannot be removed from it.

It comes with a 3D machined G10 handle and in four different colours: black, green, orange and pink.

The T.R.E. knife comes with Bohler M390 stainless steel blade.

Its spacer is in G10 black, while its frame and clips are in grey Titanium.

This model comes in a paper box packaging.

lionSTEEL IKBS
Italy



TRE GBK



TRE GGR



TRE GOR



TRE GPK

Blade: M390 Bohler 60-61 HRC

Blade length: 74 mm

Blade thickness: 3.5 mm

Overall length: 175 mm

Weight: 64 gr

Frame: Titanium 6Al4V

Handle: G10

Spacer: Black G10

Clip: Solid Titanium 6Al4V

IKBS ball bearing

Stainless steel lock-bar tip

KUR BLACK

Folding knife with Steel Frame Locksystem.
Flipper is a permanent and integral part of the blade.
It comes with a 3D machined G10 handle
and in two different colours: Black and Brown.
The knives KUR are equipped with Sleipner Steel Blade,
has a PVD-coated and "stone-washed" treated blade.
Its spacer is in made of Titanium, while its frame
and clips are made of 420 Steel.
This model comes in a paper box
packaging.

Designed by Molletta



KUR - BBK

KUR - BBR

Overall length: 210 mm. - 8.27 in.
Blade: Sleipner by Uddeholm; 60-61hrc.
Blade length: 87 mm. - 3.43 in.
Blade thickness: 4.5 mm. - 0.18 in.
Net weight: 158 gr. - 5.57 oz.
Handle: G10 (Black and Brown)
Liners: Stainless Steel
Spacer: Titanium 6Al4V
Ball bearing: IKBS

KUR

Folding knife with Steel Frame Locksystem.
Flipper is a permanent and integral part of
the blade.
It comes with a 3D machined G10 handle
and in three different colours: Black, Green,
Orange.
The KUR knife is equipped with Sleipner
Steel Blade,
Its spacer is in made of Titanium, while its
frame
and clips are made of 420 Steel.
This model comes in a paper box
packaging.

Design by MOLLETTA

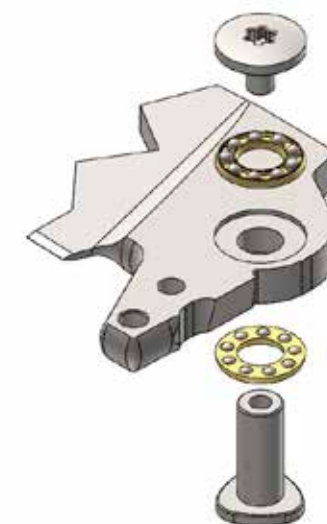


KUR - OR

KUR - GR

KUR - BK

Overall length: 210 mm. - 8.27 in.
Blade: Sleipner by Uddeholm; 60-61hrc.
Blade length: 87 mm. - 3.43 in.
Blade thickness: 4.5 mm. - 0.18 in.
Net weight: 158 gr. - 5.57 oz.
Handle: G10 (Black, Green and Orange)
Liners: Stainless Steel
Spacer: Titanium 6Al4V
Ball bearing: IKBS



lionSTEEL® IKBS
Italy



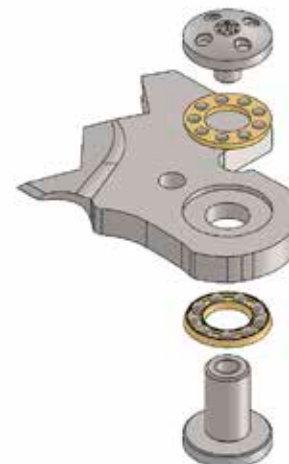
Lunghezza lama / Blade length: 94 mm. - 3.70 in.
 Spessore lama / Blade thickness: 3.5 mm. - 0.14 in.
 Lunghezza totale / Total length: 218 mm. - 8.58 in.
 Peso totale / Total weight: 169 gr. - 5.96 oz.
 Manico / Handle: G 10
 Acciaio lama / Blade steel: D2
 Imballo / Packaging: Cardboard box

BIG DAGHETTA

It is the bigger version of the historic Daghetta designed by Max in the 2000s. As the original one, this version is equipped with the LionSteel TOL Tactical Operation Lock system, which allows to open the knife with one hand and blocks the blade in the open position. Ball-bearing system to facilitate the opening system. D2 stainless steel blade with black or satin finished blade. Window breaker with tungsten carbide inserts.

Max
DESIGN

lionSTEEL® IKBS
Italv



8710 GY

8710 BK

8710 GR

Window breaker with tungsten carbide inserts.





8701 CF

8700 CF

Carbon fiber handle

DAGHETTA

Evoluzione militare della storica Daghetta di MAX. Dotata del Sistema LionSteel TOL Tactical Operation Lock (patent pending) che permette l'apertura del coltello con una sola mano e il blocco della lama in posizione aperta. Lama in Acciaio D2.

Development of the historical military "Dagha" designed by Max. Equipped with LionSteel TOL Tactical Operation Lock System (patent pending) that allows both the blade opening by one hand and the blade blocking in open position. Blade in D2 Stainless Steel.

Max
DESIGN





8701 G10

8701 AL

8700 G10

8700 AL



		CARBON FIBER	BLACK ANODIZED ALUMINIUM	G10
	Lama/blade 80 mm Totale/overall 190 mm	8700 FC	8700 AL	8700 G10
	Lama/blade 80 mm Totale/overall 190 mm	8701 FC	8701 AL	8701 G10

OPERA

La serie del modello Opera viene arricchita con la versione lama in Damasco inox Scrambled. È disponibile con manico in Ulivo, Montone, Cervo ed in Madreperla Australiana ed Abalone.

Opera's series will be enriched by a new version made on Damascus Inox Heinskingringla. It will be available in Olive wood, Ram Horn, Stag and Australian Mother of Pearl with Abalone.



8800D MOP



8800D MN




8800D CE

Max
DESIGN

OPERA

Lunghezza lama / blade length: 74 mm
Lunghezza totale / total length: 177 mm



	MOTHER OF PEARL & ABALONE	RAM HORN	STAG	OLIVE WOOD
	8800D MOP	8800D MN	8800D CE	8800D UL

OPERA & BIG

Durante gli ultimi mesi del 2006 abbiamo iniziato a collaborare con Max, volevamo arricchire il nostro catalogo con alcune linee tipicamente Italiane firmate da uno dei più prestigiosi artigiani nazionali. Sono nati così OPERA e SKINNER. La lama è in D2 con arrotatura filo rasoio e finitura satinata.

In the last few months of 2006 we started working with Max, we wished to extend our catalogue with some typically Italian lines designed by one of the most prestigious Italian artisans. Thus, OPERA and SKINNER were created. The blade is in D2 with razor edge sharpening and satin finish.



STAG



SANTOS WOOD



OLIVE WOOD

BLACK

OPERA

Lunghezza lama / blade length: 74 mm
Lunghezza totale / total length: 177 mm

BIG OPERA

Lunghezza lama / blade length: 90 mm
Lunghezza totale / total length: 210 mm
D-2: C 1.5-1.6 / Cr 11-12 / Mn 0.35
/ Si 0.3 / Mo 0.75 / V 1



Max
DESIGN

	STAG	SANTOS WOOD	OLIVE WOOD	BLACK
OPERA	8800 CE	8800 ST	8800 UL	8800 BK
BIG OPERA	8810 CE	8810 ST	8810 UL	8810 BK

MINI DAMASCUS




8210D ST

8210D MN

Scrambled damascus stainless steel



	RAM HORN	OLIVE WOOD	SANTOS WOOD
 Lama/blade 60 mm Totale/overall 145 mm	8210D MN	8210D UL	8210D ST

MINI

Anche per il 2008 si rinnova la collaborazione con MAX, una delle più prestigiose firme dell'artigianato italiano. Nasce così la nuova linea MINI. È disponibile con mostrine in Titanio o in versione manico integrale. La lama è in D2.

Also this 2008 the collaboration with MAX is renewed, one of the most prestigious names in handmade italian products. The new line MINI is born. It is available with Titanium bolster or full handle. The blade is D2.



8210 UL



8200 ST



Max
DESIGN

		SANTOS WOOD	OLIVE WOOD
WITHOUT BOLSTER	8210 ST	Lama / blade 60 mm Totale / overall 145 mm	8210 UL Lama / blade 60 mm Totale / overall 145 mm
WITH BOLSTER	8200 ST	Lama / blade 60 mm Totale / overall 145 mm	8200 UL Lama / blade 60 mm Totale / overall 145 mm

OCS SYSTEM

O.C.S. System: Open and Close Security System.
Nuovo sistema LionSteel (Patent pending) che assicura il blocco automatico della lama sia in posizione aperta che chiusa. Con un semplice movimento del pollice si aziona il blocco liberando la lama.

*O.C.S. System: Open and Close Security System.
New LionSteel System (Patent pending) which ensures the automatic block of the blade both in open and closed positions. With a simple move of your thumb, you can operate the block and free the blade.*




SKINNER

SKINNER chiudibile con blocco è un coltello per cacciatori. La lama è stata studiata appositamente per lo scuoio. Le cartelle interne in acciaio garantiscono una buona robustezza del coltello. Il sistema OCS System garantisce una maggior sicurezza durante la fase di lavoro.

SKINNER is a hunting jack-knife with block. The blade has been designed specially for skinning. The inner layers in steel ensure a good strength of the knife. The knife is equipped with the OCS System to ensure greater safety while working.

Max
DESIGN



	SANTOS WOOD	OLIVE WOOD	G 10
	8901 ST Lama / blade 71 mm Totale / overall 183 mm	8901 UL Lama / blade 71 mm Totale / overall 183 mm	8901 G10 Lama / blade 71 mm Totale / overall 183 mm



Lunghezza totale / Total length: 252 mm. - 9.92 in.
 Lunghezza lama / Blade length: 128 mm. - 5.04 in.
 Spessore lama / Blade thickness: 5 mm. - 0.20 in.
 Peso netto / Net weight: 274 gr. - 9.67 oz.
 Manico / Handle: Micarta
 Acciaio lama / Blade steel: Niolox

Venduto con fodero in pelle
 nera con sistema Molle

Sold with black leather sheath
 featuring Molle system



T5

Come il fratello più grande L'M7, il T5 è un Solid Knife con il manico in micarta ottenuto in fresatura da un singolo pezzo.
 Lama in acciaio Niolox.
 Disponibile in versione satinata o nera.

*As its bigger M7 brother, the T5 is a Solid Knife with a micarta handle obtained by machining a single piece.
 Blade in Niolox steel.
 Available in satin finished or black version.*



T5B MI



T5 MI



M7

M7 è il nuovo lama fissa targato LionSteel. Si tratta di un coltello di grandi dimensioni se comparato con gli altri modelli LionSteel. Il nostro obiettivo era quello di costruire un buon coltello multiruolo da campo. Abbiamo quindi deciso di utilizzare un vecchio progetto sviluppato alcuni anni fa con Molletta (Carthago prodotto in serie limitata) e con le dovute modifiche lo abbiamo rimesso in produzione. E' disponibile con manico in Micarta SOLID® lavorato con un centro di lavoro a quattro assi, la lama può essere satinata o nera.

M7 is the new LionSteel fixed-blade knife. Compared with the other LionSteel branded models, it is a large knife. Our goal was to build a good multi-purpose utility knife. So we decided to use an old design developed a few years ago with Molletta (Carthago, a limited series of which was produced) and we re-launched production after due amendments were made to the original design. It is available with a SOLID® Micarta handle machined with a four-centreline station, featuring a satin finished or black blade.

SOLID® knife



M7 MS

M7 MB



Il fodero è in Kydex con supporto in cordura, il passante alla cintura unito con il sistema MOLE garantisce una facile vestibilità.

The Kydex sheath features a cordura lining and a belt loop joined using the Molle system for guaranteed easy wearability.

Lama / Blade: 180 mm
 Lunghezza totale / Overall: 315 mm
 Spessore / Thickness: 5.5 mm
 Acciaio / Steel: Sleipner Uddeholm
 Manico / Handle: Solid Micarta
 Peso / Weight: 407 gr.
 Fodero / Sheath: Cordura + Kydex



Questo coltello viene venduto con fodero in vera pelle nelle versioni in legno e fodero in Cordura nella versione Micarta.

It is sold with a brown leather sheath for all the wood handles and Cordura sheath for Micarta handle.

M5

La gamma dei coltelli a lama fissa si arricchisce di un nuovo modello da 5 pollici di lama. L'obbiettivo era quello di creare un coltello tutto fare, facile da portare ed efficace nell'uso. Le versioni sono quattro, tre con lama satinata ed una con lama in PVD con trattamento "stone washed". I manici disponibili sono tre: G10 nero, legno Santos e legno di Ulivo. Le versioni in legno sono vendute con fodero in pelle mentre le versioni in G10 sono vendute con fodero in Cordura nera. Le viti sono in acciaio inox con sistema di serraggio Torx T8. Design by Molletta

Our fixed-blade knife range has been increased by a new 5" blade model. Our purpose was to produce an all-around knife that can be easily carried and handled. It comes in four different versions, three of them have satin finished blade and one has a PVD-coated and "stone-washed" treated blade. It has three different handle versions: black G10, santos wood and olive wood. The wood handle versions are equipped with leather sheath, while the G10 version come with black Cordura sheath. It features stainless steel Torx T8 bits closure system. Designed by MOLLETTA



M5 UL - olive wood

M5 ST - santos wood

M5 G10

M5B G10

Lama / Blade: 115 mm
 Lunghezza totale / Overall length: 241 mm
 Spessore / Blade thickness: 4.5 mm
 Acciaio / Steel: Sleipner Uddeholm
 Peso / Net weight: Legno / wood 335 gr., G10 350 gr.
 Fodero / Sheath: Legno in Pelle / Wooden Leather, G10 in Cordura

Design Molletta



Questo coltello viene venduto con fodero in vera pelle.
It is sold with a brown sheath leather for all version.



M4

La gamma di coltelli a lama fissa si arricchisce ulteriormente di un nuovo modello che fa parte della categoria bushcraft, ottimo anche per le vostre scampagnate in montagna. L'impugnatura può essere utilizzata sia dritta che rovescia. Disponibile in quattro versioni, manico in Ulivo, Legno Santo, Noce e G10. La lama è in M390 Satin, lunga 95mm. Tutte le versioni sono vendute con fodero in pelle marrone con doppia cucitura.

The fixed blade knife line is now richer, with a new model in the bushcraft category.

It's perfect for your mountains hikes, and the handle can be used both straight backwards.

The M4 is available in four versions: olive, santos wood, walnut or G10 handle.

The blade is in M390 satin finished steel, and is 95 mm long.

All versions include brown leather sheath with double seam.

Lama / Blade: 95 mm
Lunghezza totale / Overall length: 205 mm
Spessore / Blade thickness: 4 mm
Acciaio / Steel: M390
Peso / Net weight: Legno / Wood 145 gr., G10 180 gr.
Fodero / Sheath: Pelle / Leather

Design Molletta



M4 G10



M4 WN walnut wood



M4 ST santos wood



M4 UL olive wood



Questo coltello viene venduto con fodero in vera pelle nelle versioni in legno e fodero in Cordura nella versione Micarta.

It is sold with a brown leather sheath for all the wood handles and Cordura sheath for Micarta handle.



Lama / Blade: 105 mm
 Lunghezza totale / Overall: 235 mm
 Spessore / Thickness: 5 mm
 Acciaio / Steel: Niolox
 Manico / Handle: Ulivo / Legno Santo / micarta
 Peso / Weight: 230 gr.
 Fodero / Sheath: Cordura or Leather

M3

Dopo il successo del coltello a lama fissa M2 abbiamo deciso di proporre una versione più grande. Rispetto al fratello più piccolo è stato aumentato lo spessore della lama fino a 5 mm e cambiato acciaio, Niolox. Finitura della lama satinata. Le guancette sono il legno di Ulivo, legno Santo e Micarta e sono smontabili. I manici sono lavorati con fresatrici in 3D per permettere di avere una maggiore ergonomia del manico. La tramatura superficiale ne aumenta il grip. Le viti sono in acciaio inox con sistema di serraggio Torx T8.

After the success of the M2 fixed blade knife we decided to propose a larger version. The blade is made of Niolox, it has 5 mm of thickness. The blade is satin finished. The handle is made of Olive wood, Santos wood and black Micarta and they are fixed by stainless steel Torx T8 screws. The handles are worked with a 3D milling machine in order to have a better ergonomic handle. The surface texture allows a better grip. It is sold with a brown leather sheath for all the wood handles and Cordura sheath for Micarta handle.



M3 UL - olive wood



M3 ST - santos wood



M3 MI - micarta

M2

Piccolo coltello da caccia. Disegnato, studiato e sviluppato dal Forum MCKF. La lama è fatta in D2 con spessore 4 mm. Viene venduto con fodero in pelle nella versione in legno e in Cordura per la versione G10.

Small hunting knife created in collaboration with the Italian Forum MCKF. The blade is made of D2 and has 4 mm. thickness. Sold with a leather sheath in the wood version and cordura fabric in the G10 version.

M2 UL - olive wood



M2 ST - santos wood



M2 G10



Manico in legno con fodero in pelle
Manico in G10 con fodero in cordura

*Leather sheath with wood handles
Cordura sheath with G10 handles*

Lama / Blade: 90 mm
Lunghezza totale / Overall: 195 mm
Spessore / Thickness: 4 mm
Acciaio / Steel: D 2
Manico / Handle: Ulivo / Legno Santo / micarta
Peso / Weight: 110 gr.
Fodero / Sheath: Cordura + Kydex

STEAK KNIFE

Steak knife è nato dopo molteplici richieste di cacciatori e appassionati del coltello. Ci chiedevano un coltello non solo da lavoro, da utilizzare durante le fasi della caccia, ma qualcosa di bello da poter usare e mostrare agli amici durante le cene di fine battuta. Il manico è monolitico disponibile in legno di Ulivo.

Steak knife was created after receiving many requests from hunters and knife-lovers. They asked for a knife which could be used not only as working tool for hunting, but also to be shown to friends as a nice object during after-hunting dinners. The handle is monolithic and is available in Olive wood.



9001 UL



9001C UL



9001S UL

	OLIVE WOOD		OLIVE WOOD		OLIVE WOOD
	9001 UL	Lama / blade 105 mm Totale / overall 210 mm		9001S UL	4 pezzi / 4 pieces Lama / blade 105 mm Totale / overall 210 mm
				9001C UL	6 pezzi / 6 pieces Lama / blade 105 mm Totale / overall 210 mm



ACCESSORY COLLECTION

La forza di un design innovativo e l'applicazione di nuove e sofisticate tecnologie, consentono oggi a LionSteel di andare oltre i confini dei propri prodotti classici: per dare vita a oggetti e accessori che raccontano uno stile, una visione imprenditoriale e la passione per le sfide creative.

The strength of an innovative design and the application of new and sophisticated technologies, today allow LionSteel to go beyond the boundaries of its classic products: to give life to objects and accessories that tell a style, an entrepreneurial vision and the passion for creative challenges.



Nyala
pen

Nyala è la penna creata da LionSteel. Il corpo è internamente in titanio. Gli inserti sono disponibili in damasco Super Dense Twist (di Damasteel) oppure in fibra di carbonio. Questa penna è caratterizzata da una meccanica "twist pen", e la ricarica interna è prodotta da Fisher. Space Pen. PR4. Colori disponibili: grigio lucido, blu lucido, bronzo lucido, blu opaco.

Nyala is the pen made by LionSteel. The body is entirely made of titanium. The insert is available either in Super Dense Twist damascus (by Damasteel) or in carbon fiber. This pen features a twist pen mechanic, and the space refill is made by Fisher, Space Pen PR4. Available colours: grey shine, blue shine, bronze shine, blue matte.

Specifiche tecniche / Technical specifications

Peso netto CF/ Net weight CF: 25 gr. - 0.88 oz.
 Peso netto D / Net weight D: 31 gr. - 1,09 oz.
 Imballo / packaging: scatola di legno / wooden box
 Struttura / Structure: Titanio / Titanium
 Lunghezza / Length: 117 mm
 Diametro / Diameter: 10 mm
 Cartuccia / Refill: Space Pen PR4

RUMICI
Design



CARBON FIBER



NY FC BLS



NY FC BRS



NY FC GYS



NY FC BLM

DAMASCUS



NY SDT BRS



NY SDT GYS



PR4 REFILL

SPACE PEN CARTUCCIA

Fisher Space Pen Co. has been providing pens & ink cartridges for the Space Program for over 45 years, with pens flown on every manned space flight and in use, every day, aboard the International Space Station. Based on technology developed by Paul C. Fisher in 1966, The Fisher Space Pen is designed to perform reliably anywhere and everywhere. The sealed pressurized ink cartridge inside this pen will allow it to write in extreme temperatures (-34 degrees Celsius to 121 degrees Celsius), under water, over grease, at any angle, even upside down! "Goes Anywhere, Writes Everywhere"™



TWIST
movement





lionbeat

sharp emotion

lionbeat

LionBeat is a small accessory belonging to the SolidKnife™ family: the handle is a unique piece of natural material, to which the blade is attached. It's an all-around object: it can be used as a keychain, as a pendant for a necklace (weight is just 14 gr, 0.49 oz!), and as an accessory for a purse. Small, lightweight and stylish, it's the essential accessory of the Lionsteel family. Besides, it's a real knife which, thanks to its lightness and to the AISI 440 stainless steel blade, is ideal for a variety of different tasks.

ZANDA DESIGN



LB UL - olive wood handle

Overall length: 42 mm. - 1.65 in.
Blade length: 30 mm. - 1.18 in.
Net weight: 80 gr. - 2.82 oz.
Handle: Olivewood - Santos - Ebony - Horn
Blade steel: AISI 440



LB CO - horn handle



LB EB - ebony handle



LB ST - santos wood handle

MONEY CLIP

Elegante oggetto costruito con scocca in Titanio. La clip è in acciaio inox temperato. Disponibile con varie versioni di inserti.

Elegant money clip built with titanium body and a stainless steel clip. Available with several different inserts.



PB MN

PB FC

PB MOP

PB RA

PB UL

Available
Ram horn
Carbon Fiber
Mother of Pearl
Brierwood
Olive wood

Disponibile
 Corno di montone
 Fibra di Carbonio
 Madreperla
 Radica
 Ulivo

Il porta banconote viene venduto in una elegante scatola in legno

It comes with a nice wooden gift box



MONEY CLIP

Elegante oggetto costruito con scocca in Damasco Scrambled. La clip è in acciaio inox temperato. Disponibile in varie versioni di inserti.

Elegant money clip built with Scrambled damascus body and a stainless steel clip. Available with several different inserts.



PB-D RA

PB-D MOP

PB-D MN

Available
Brierwood
Mother of Pearl
Ram horn

Disponibile
 Radica
 Madreperla
 Corno di montone

Il porta banconote viene venduto in una elegante scatola in legno

It comes with a nice wooden gift box



ACORN DICE

AcornDice begins its life as a good luck charm and a symbol of magic. In many ancient cultures, the oak apparently was cosmic tree, which represented the bond between the divine world and the mortal world, so the oak fruit has always been associated to life and eternity. It is told that giving acorns, real or in valuable materials, as gifts is a symbol of luck and fertility. Acorns can be used as lucky charms or talismans: they make dating easier and, if in pairs, preserve marriages from crisis.



DD OT ACORN DICE - BRASS

ESKAPER

303 Stainless steel key ring with tungsten carbide tip. Useful security tool to easily break the glass in case of need. It also features a handy bottle opener.

- MULTIFUNCTION:
- Bottle Opener
 - Keychain
 - Glass breaker
 - Emergency self defence
 - Kubotan

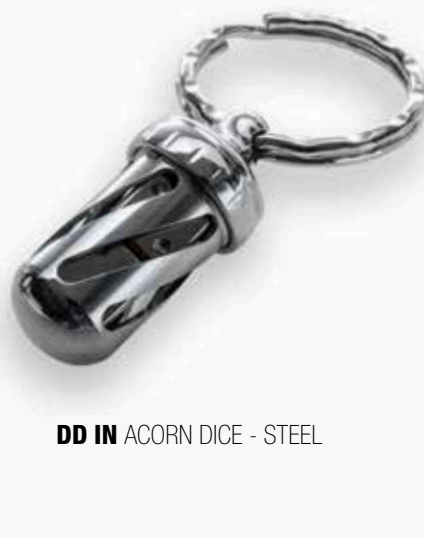
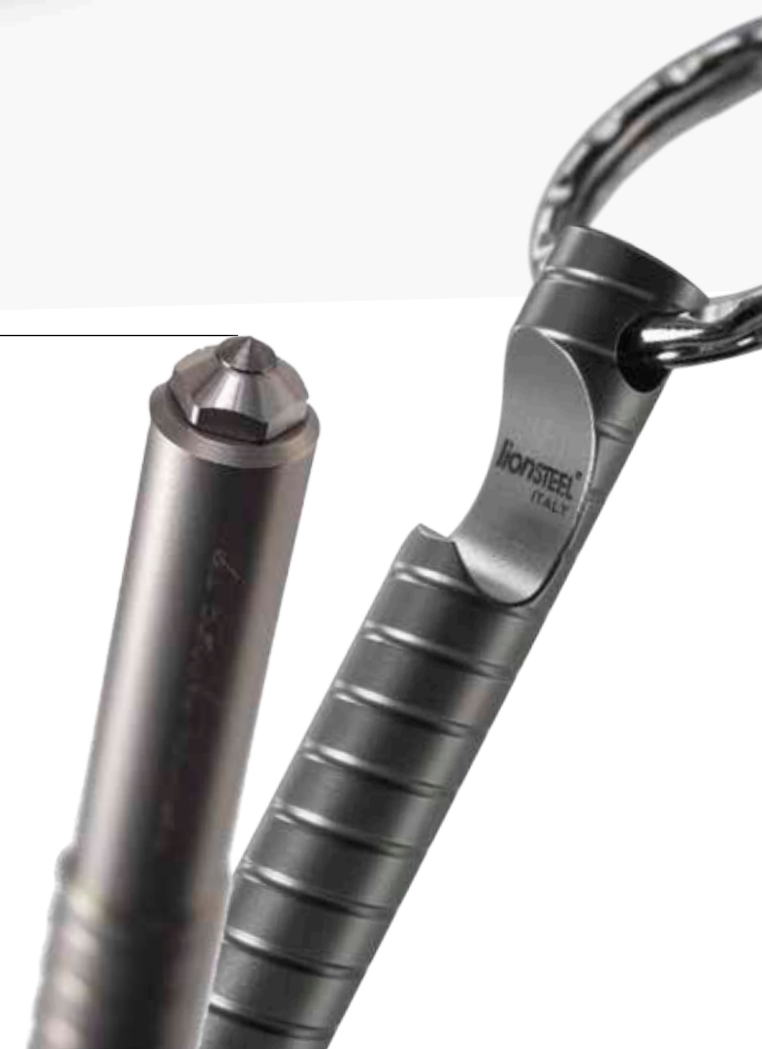
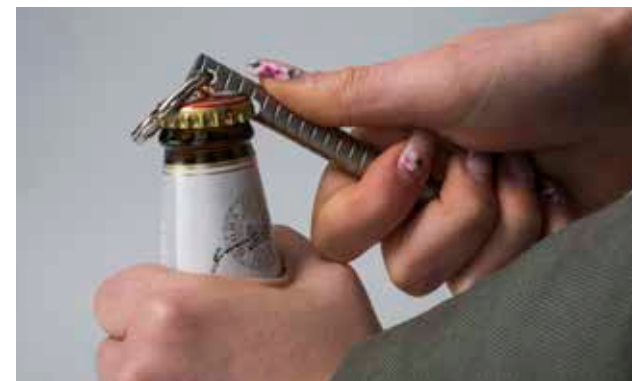


Overall length: 10,6 cm. - 4.17 in.
 Net weight: 45 gr. - 1.59 oz.
 Steel: 303
 Packaging: Paper box
 With Tungsten carbide

Tungsten carbide tip

- Bottle Opener

- Glass breaker



DD IN ACORN DICE - STEEL

Variant: Brass - Steel
 Overall length: 3,5 cm. - 1.38 in.
 Net weight: 29 gr. - 1.02 oz.
 Steel: AISI 440
 Monolithic 303 stainless steel body

Gino Pauletta

Maniago, handmade stories

il sogno americano

“...and the winner is... Kur Metamorphosis: Overall Knife of the Year 2016”. What a feeling to hear one of your creations being declared “the knife of the year” at the Blade Show in Atlanta. It is our sixth prize since 2012.

It is quite something, to have started off in the little Italian town of Maniago, an unforgiving land at the foot of the mountains, and to be here now, a winner, at the biggest knife trade show in the world, in the city home to Coca Cola and the world’s busiest airport. Little David from Friuli continues to take on the Goliaths of American business.

This is our third “Overall Knife of the Year” award, after the one in 2014 for TiDust and in 2015 for T.R.E. Titano. A hat trick, topped off by an even more prestigious achievement: the “Manufacturing Quality Award”, which crowned LionSteel as the best company in 2014, knocking the Yankees off the top spot, which they had held since time immemorial. To continue the football metaphor, it is like winning a World Cup final in Rio de Janeiro against the home side with team of amateurs. Except that there is almost nothing amateurish about the industrial performance of LionSteel; just one element has remained the same over its almost sixty-year history, since Gino Pauletta started his existential relationship with knives. It is an increasingly rare and valuable specimen: passion.

Today, it is his son, Gianni, picking up the award in Atlanta. That’s right, because Gino is one of those stubborn craftsmen that will not leave the workshop, but will happily hand over the reins. He knows that the same burning desires and dreams can take on the form of new technologies and new materials, go down different and

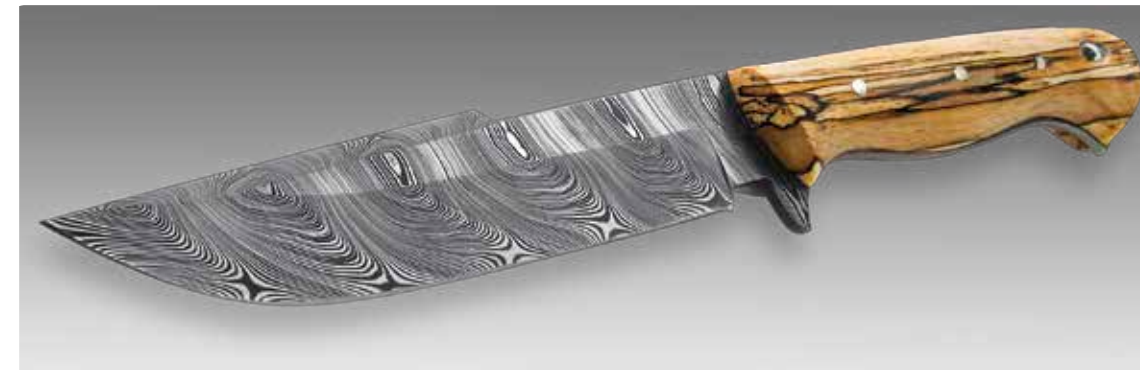
unexpected paths – and it must be the younger generations, less intoxicated by feelings of nostalgia and with more energy to give, that take on the challenge. That is why, at the turn of the century, or rather the new millennium,

Gino passed the baton to his sons: Daniele, Gianni and Massimo. But he has never left the factory, of course not. He is still there, working his magic, wanting to make toys that often turn into gold and, sometimes, inspire new products. Gino is the wizard that thinks with his hands and, when he thinks, his bright eyes smile from corner to corner, and it is almost as though the object is reflected in the glint of his eye a few moments before it comes to life. Everything he does is well thought out and shows determined direction.

He started out as a young boy, on 1 January 1957, at FARM, Fabbrica Articoli Reclame Maniago. To guarantee himself some economic freedom, and satisfy his insatiable passion, he did not think twice about clocking up extra hours in the evening and on Saturdays and Sundays, working on behalf of third parties. That was how it was back then, even working 15-hour days because a workman’s pay was not enough, especially if you wanted to start a family. Then, in 1969, the time came to break away, just like the LEM did from the Apollo 11 in that very same year, aiming for the moon. Gino was not to know precisely where his “moon” was at the time, but nonetheless he wanted to become an entrepreneur, a craftsman, and follow his own, solitary path, with the enthusiasm of someone who knows they have got a bit of America already in them.

A lion roared inside him, the same lion that his masonry ancestors had carved with the stone of Mount Jôuf and, in the courtyard of his home, watched over the children with an evil twinkle in its eye that sent shivers down the spine. That wild beast remained fixed in his mind, and it later became his trademark, for its primeval power and, better still, for what it represented: its being, an envisaged form, carved into a raw material. That form is what Gino alone sees in a piece of raw metal, a knife edge he traces with his gaze, that imperceptible curve that only to him looks like valleys and mountains, then the filing, over and over again to achieve the perfect gradient, so that all the blades of that multi-purpose knife fold away side by side, precision

down to tenths of a millimetre, without touching, slotting into place with a “click” that brings joy to the most attuned ears. Music to the ears, indeed! And so what if it is not always knives. What matters is taming the beast, shaping the metal. In 1969, an order for a hundred or so tin openers for Farfalli came to christen the new company, and that soon turned into 3,000, then 3,500, and so on. Then came the pen knives for Coricama, which made their way to Milan, Rome and Germany. It wasn’t time for America yet, but, at that point, Italy and Europe were enough. So, here’s the story. It was a warmish day in winter 1978. In Friuli, the earthquake had left a lot of open wounds, but we were not to complain: the economy had picked up, full steam ahead, the orders were coming in and taking a few days off was not out of the question. Gino, with his wife Cesarina, was visiting relatives in Milan. They took a stroll through the famous gallery, under that vaulted glass roof supported by metalwork. Just beautiful. Gino, especially, was really able to appreciate



it. Then a gift shop window caught his eye, who knows why, and everything else around him vanished into nothingness. Like a mirage in the desert, that pocketknife, made in the USA, was the only thing he saw. It was a delight like nothing he had ever witnessed before; he had to go in and buy it, no matter the price tag. Sixty thousand Italian lire [ed. about 30 euros]. Quite a sum. Quite an investment. The beauty, this time, was all in the handle, made using two materials combined together with inlays. There was no time to lose. He had to replicate that masterpiece, with a special touch of made in Maniago innovation, of course. It was time Japan met Italy. Gino was able identify the perfect two materials for the job: brass and olive wood. He was the first to come up with this elegant combination, even just the olive wood alone would have been a major innovation. The time had come to industrialise the idea and put together the members of the consortium to do it. For the most important production works, he found the right person for the job in the town of Malnisio, and work could finally begin on the first prototypes and then the start of production.



Gino Pauletta founder of LionSteel in 1969

...il sogno americano

An A-grade product was born, the 110, and the distinction was awarded by the market itself, with a boom in sales in 1979-80. It encapsulated all of the skill and expertise that belonged to Gino: his eye, his ability to internalise an innovative idea and turn it into something even newer, his enthusiasm that boosted energy and brought people together, his desire to break away from the yoke of working on behalf of others, to create something of his own, something that could make him walk with his head held high, something that commanded a certain exclusivity. "We were able to sell the 110 for 8,500 lire [ed. about 4 euros], factory price. Not bad, for the time. Each item sold brought us a nice return, and with the profits we were able to grow the business."

That is what you call a businessman. Someone who knows how to imagine the value of an object that does not exist, of a product in the making, and then gets on with making it, bringing it to life with his own hands. That is what Gino was like, and had been since he was a young boy working at FARM, since the day he found a nugget in Colvera creek, the torrent waters which had powered the mills of Maniago for more than a thousand years, that living water that transformed metal. The nugget was a scrap from a knife maker's. In that rough gem, that piece of waste from our industrial civilization, Gino saw his first pocketknife; he held it close to him, to make sure it did not get away, and, with not very much but a good dose of willpower, he liberated it from its half-formed destiny. When he thinks back to that first endeavour as a young man, he feels even closer to his own sons, to each of whom he has passed on a part of his passion. Gianni travels the world seeking out (and delivering) innovation, and today he is the one in Atlanta. Daniele and Massimo work by his side in the workshop and continue to listen to his advice (but thankfully they do not always agree with him!). What matters, nonetheless, is that his passion has been contagious and now flows in their veins, in their lives, making them



surprise him every day with new creations, which he would never even have been able to imagine. So many materials. Such different processes. The speed of blade production with 3D design, water jet cutting and laser cutting. And yet, if we look at the real essence behind it all, not much has changed between then and now. The real furnace burns away inside of us, the bellows are the sound of our heartbeat. High technology, the one that Gino knew and the one his sons know today, is, above all, powerful imagination, a journey of the mind inside a form, anticipating the difficulties and the resistance of the materials that you have to get to know and to love, to fight them fairly.

To defeat the lion.

When Gino looks at the products from the last decade, it seems impossible that his boys were able to make a titanium monolithic handle, milled from a single unit.

Or the ultra-light TiDust model with openwork, made by selective melting titanium

powder: the first knife in the world made using aerospace technology! The LEM that broke away from Apollo 11, when he opened his workshop, is still en route. It is heading beyond the moon and Jupiter too, towards infinity, with his sons as the crew. And it will go on travelling as long as there is a desire to explore. Even though, as a man true to his origins in Maniago, he struggles to admit it, Gino is proud of his sons. He is proud that Gianni is there, in America, right now, receiving his first prize.

Gino has never been to America.

America found him, that day in Milan.

Il coltello amico e strumento di lavoro

Per un perfetto utilizzo e mantenimento del coltello segui queste semplici regole:

Mantieni sempre il coltello ben affilato, un coltello ben affilato richiede meno forza nell'utilizzo ed è perciò potenzialmente meno pericoloso.

Mantieni sempre ben pulita la zona di bloccaggio del coltello, la sporcizia potrebbe far mal funzionare il sistema di bloccaggio, per pulire questa zona ti consigliamo di utilizzare aria compressa.

In molti dei nostri coltelli è presente acciaio con alte percentuali di carbonio per una migliore tenuta del filo.

Sfortunatamente il carbonio è l'elemento che causa la ruggine.

Consigliamo pertanto una pulizia frequente e l'applicazione sulla lama di un leggero strato protettivo di olio.

Hai dei dubbi a cui non trovi risposta?

Entra nel sito www.lionsteel.it ti aspetta una sezione dedicata al miglior utilizzo e ai metodi di mantenimento del coltello.

Inoltre hai la possibilità di richiederci ulteriori informazioni direttamente via e-mail a cui risponderanno i nostri fidati tecnici nel più breve tempo possibile.

The knife, a friend and a work tool

For perfect use and maintenance of your knife, please follow these simple instructions:

Keep your knife well sharpened.

A well sharpened knife requires less force to use it and the potential hazard is therefore reduced.

Keep the locking area of the knife clean, dirt may cause the locking mechanism to malfunction.

We suggest to use compressed air to clean this area.

In many of our knives there is steel with a high percentage of carbon, in

order to keep them sharp longer.

Unfortunately carbon causes rust.

Therefore we suggest frequent cleaning and to put a light coat of protective oil on the blade.

Can't find what you are looking for?

Visit the site www.lionsteel.it.

You will find a section about the better use and maintenance of your knife.

You can also ask for information directly by e-mail.

Our technicians will answer you in the shortest time possible.





- > **Discover** the LionSteel channels to check our product data sheets. And there is more: you can find updates on the worlds of knives, info on design contests, trade shows, museums and all the news and innovative ideas of the industry.
- > **Register** now to get e-mail updates on LionSteel products, technology and production.
- > **Share** with us your passion and your views on our products. LionSteel gives you the chance to interact by using a social media multi-channel system and make the most of Facebook, Twitter, You Tube and Google +.



www.lionsteel.it



Lionsteel Facebook



Lionsteel YouTube



LionSteelknives Twitter



Lionsteel Google+



Lionsteel Pinterest



Lionsteel Instagram

LionSteel WARRANTY

LionSteel knives are designed and built for use as cutting tools. Use of our knives for any purpose other than cutting is considered abuse. As with any tools LionSteel knives can wear out. They may also fail to perform if not used or cared for properly. Table test is an abuse of the knife unconditionally voids the knife's warranty.

WARRANTY INFORMATION:

LionSteel warrants that all of our products are free from defects in material and workmanship. If a knife or other product fails to function as it was designed, it should be returned to LionSteel's Warranty Repair Department for examination and evaluation of the problem.

If we determine that there was a defect in materials or workmanship, we will repair or replace it with the same model or one of comparable value at our expense.

If LionSteel determines that the problem with a knife was not due to a defect in materials or workmanship, we will assess our ability to repair the knife and provide a quote for those repair services.

If LionSteel is unable to improve the condition of a knife, we will return it with the recommendation it be retired from use.

LionSteel's warranty policy does not cover any damage caused by disassembly, abuse, misuse, loss, improper handling, alterations, accident, neglect, improper sharpening, or normal wear. Repairs or modifications performed by any source other than LionSteel also unconditionally void the knife's warranty.

All costs associated with shipment to returned product are the responsibility of the customer.

Please contact warranty and repair for more information:

E-mail: service@lionsteel.it

WHERE TO SEND YOUR KNIFE:

When sending your knife for warranty or repair, please include a description of the problem and how it occurred.

Please also provide a name, return address (no P.O. boxes please), a phone number and e-mail. Your knife will be sent by FedEx or parcel mail. Please allow 2-3 weeks for repair processing.

LIONSTEEL SAS

Via dei Fabbri 32
33085 MANIAGO – PN – ITALY
info@lionsteel.it

QUALITY CERTIFICATE

LionSteel warrants that all of our products are free from defects in material and workmanship. If a knife or other product fails to function as it was designed, it should be returned to LionSteel's Warranty Repair Department for examination and evaluation of the problem.



ACTIVATION OF WARRANTY

- Thank you for your choice; now, please register on line to activate the warranty
- Go to page www.lionsteel.it/warranty
- Follow the procedure to activate the Warranty

For further information on the warranty: www.lionsteel.it/warranty



Dasa-Rägister

EN ISO 9001:2008

IQ-0616-02



MOLLETTA

Michele Pensato - aka 'molletta', his nickname in Italian - is a very active designer with years of experience. His previous life as an excursion lover and a passion for archaeology had him spending most of his experiences in the great outdoors, where he soon got to understand how a great knife should really be and what it should be capable of achieving.



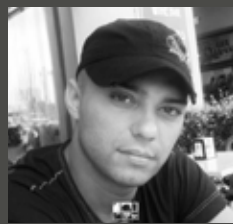
MAX

Massimo Salice Sanna: after starting making knives in 1993 as a hobby, soon his passion became a real job and day-to-day activity. Well known for his accurate touch and the eye for details, he is considered one of the first kn s noticed and therefore chosen by LionSteel for his precision and attention to design and mechanical features of the knives he makes. The Opera model was born in 2006, followed by other product families Daghetta, Mini and Skinner.



RYP

Robert Young Pelton is an author, journalist and documentary filmmaker. An iconoclast known for his entry into most of the world's conflicts over the last fifteen years, Pelton is known as an adventurer and a witness to conflict. His reputation is built on his interest and ability to enter forbidden, deadly and violent places and emerge with a stunning story. Pelton founded DPx Gear, Inc. in 2011 to create gear based on his needs for equipment in hostile and deadly environments.



ZANDA

Costantino Zanda: "My name is Costantino Zanda, I live in Sardegna (Sardinia) soth coast, more precisely in Arbus. I entered the 'knife world' when I was 16 years old, learning this art from my then-boss Francesco Pusceddu, who was a big teacher for me both on work and life for 15 great years. Unfortunately, Francesco died 4 years ago, so I decided to begin working on my own, focusing on artisan works linked to Sardegna tradition, as it is tradition which keeps identity alive.

Among all my creations, a very important one is 'su Coru' (the heart), which name derives from the particular and elegant shape of this knife. To see my works, you can browse the 'Coltelleria Costantino Zanda' Facebook page".



RUMICI

Nato il 3 agosto '83, Tommaso Rumici è un designer italiano che lavora nel mondo della coltelleria dal 2006. Molto attento alla funzionalità e al rispetto dell'anatomia della mano, crea oggetti votati all'impiego pratico, caratterizzati da linee decise. Si concentra sull'estetica, che pure cura minuziosamente, solo in un secondo momento. Il suo punto di forza è la passione, che lo spinge ad ampliare costantemente il suo bagaglio tecnico, studiando design, meccanica, materiali, trattamenti, e tutto quanto necessario per migliorare. Appassionato e collezionista di strumenti di scrittura, lavora rigorosamente con carta e penna, traducendo il risultato in make-up, quando necessario per approfondire lo studio ergonomico. Tommaso collabora con riviste di armi e coltelli, sia italiane che internazionali. E' presente su Instagram e Facebook.

COLLABORATION

CRKT: Hi Jinx

Nel 2014 nasce la collaborazione con l'azienda Americana CRKT con la produzione del modello chiudibile Hi Jinx disegnato da Ken Onion



In 2014 we launched a partnership with the famous American company CRKT, starting out with the Hi Jinx folding model. Ken Onion design.



Pohl Force: kilone Foxtrot

Nel 2012 nasce la collaborazione con la nota azienda Tedesca PohlForce con la produzione del modello chiudibile FoXtrot e si allarga poi anche alla versione a lama fissa, KiloOne.



In 2012 we launched a partnership with the famous German company PohlForce, starting out with the FoXtrot folding model to then include the fixed blade version - KiloOne.



LIONSPY



T3



Spyderco: LionSpy

Durante l'anno 2011 nasce l'importante collaborazione con la SPYDERCO. Il modello SR1 viene per loro personalizzato unendo il design LionSteel con i segni SPYDERCO universalmente riconoscibili, foro per apertura con una mano.

2011 saw the beginning of the important collaboration with SPYDERCO. The SR1 model is customised for this project by combining the universally recognisable LionSteel design with the SPYDERCO logos and hole for single-handed opening.

DPx GEAR : T3

Collaborazione nata con la produzione del coltello chiudibile frame-lock HEST. A questo chiudibile, durante il 2011, si sono sommati immediatamente altri tre coltelli a lama fissa. Durante il 2012 la famiglia di prodotti LionSteel-DPX si arricchisce di altri modelli chiudibili e fissi portando la gamma completa ad una decina di prodotti. Il modello T3 si distingue nel 2012 con la vincita del premio "Blade".

A collaboration born with the production of the frame-lock HEST folding knife. In 2011, another three fixed-blade knives were immediately added to this folding knife model. During 2012 the family of LionSteel-DPX products was further extended with other folding and fixed-blade models, taking the complete range to about ten products. The T3 Model of 2012 has been recognised in the same year with the 'Blade' award.



CHAD NICHOLS

DAMASCUS

Chad began producing Damascus in 2003 and turned a hobby into his sole profession since 2005.

From the onset, his obsession was to manage to create his very own Damascus which would on the one hand afford excellent technical characteristics, given the good-quality raw materials, and on the other an artistic design which would stand out from the rest of the existing damascus products on the market.

This obsession for details allowed him in a very short space of time to establish himself as one of the best Damascus producers in the world.

All the Damascus bars are entirely hand-made by Chad Nichols

Indeed, it was this passion and attention to detail, both on the product and on its styling, which convinced us to pick Chad Nichols as our partner in the production of Damascus blades.



DAMASTEEL

DAMASTEEL

The family-owned company Damasteel has its seat in the heart of the Swedish steel industry, the small mill town of Söderfors. In this scenic environment, among forests, lakes and rapids, steel has been manufactured since 1676.

Damasteel has a world patent for its modern approach to manufacturing a stainless Damascus steel through using powder metallurgy. The product is unique in its absolute strength and sharpness. Our blacksmiths have a genuine knowledge of design, which makes the premium steel from Damasteel widely known for its beauty.

STEEL	C: CARBON	CR: CHROMIUM	MN: MANGANESE	SI: SILICON	MO: MOLYBDENUM	V: VANADIUM	NB: NIOBIUM	W: WOLFRAM	CO: COBALT
420	0.36 - 0.42	12,5 - 14,5	1	1	0,6				
W.1.4116	0,55	14 - 15	1	1	0,5 - 0,8	0,02 - 0,1			
440 A	0,60 - 0,70	14 - 16	1	0,7	0,4 - 0,8				
440C	0.95-1.2	16-18	1	1	0.75				
N690	1.1	17	1	1	1.1	0.1			1,5
Nilox	0.8	12.7			1.1	0.9	0.7		
Sleipner	0.9	7.8	0.5	0.9	2.5	0.5			
D-2	1.5-1.6	11-12	0.35	0.3	0.75	1			
Elmax	1.7	18	0.3	0.8	1	3			
M390	1,90	20,00	0,30	0,70	1,00	4,00		0,60	
ATS34	1.05	14	0.4	0.35	4				
154CM	1.05	14	0.5	0.3	4				
BG-42	1.15	14.5	0.5	0.3	4	1.2			

ASSUMPTION OF RISK

By purchasing any item produced by LionSteel, Inc. the buyer assumes responsibility to research and comply with all applicable federal, state, local and international laws related to the ownership, possession, carry, transfer, shipment transport, and use of any LionSteel product. The buyer expressly agrees to indemnify and hold harmless LionSteel, Inc. for all claims resulting directly or indirectly from the purchase, ownership, transportation or use of the item in violation of applicable federal, state and local laws or regulations. LionSteel is not liable for the misuse of any LionSteel knife or product purchased either directly from LionSteel or from a dealer, distributor, or any other party. You must be 18 years of age to purchase LionSteel knives. Information in this catalog is subject to change without notice. LionSteel reserves the right to change or modify products, materials, measurements, technical specifications, pricing and availability.



LionSteel sas

di Pauletta Gianni M. D.

Via dei Fabbri, 32
33085 Maniago (PN) – Italy
Tel. +39 0427 71984
Fax +39 0427 709032

www.lionsteel.it
info@lionsteel.it